

## Codebook

### Index for assembly based (AIPD) and plebiscitary based (PIPD) intraparty democracy V1

#### Based on round 2 of the Political Party Database

<https://www.politicalpartydb.org/>

Simon Brause

Heinrich Heine University

[Simon.Brause@hhu.de](mailto:Simon.Brause@hhu.de)

Thomas Poguntke

Heinrich Heine University

[poguntke@hhu.de](mailto:poguntke@hhu.de)

April 2025

For the use of the data, please cite the following article.

Brause, S. D., & Poguntke, T. (2024). Measuring intra-party democracy on a global scale. *Party Politics*. Advance online publication. <https://doi.org/10.1177/13540688251323756>.

For round 2 of the PPDB data:

Scarrow, S. E., Webb, P. D., & Poguntke, T. (2022). Intra-party decision-making in contemporary Europe: improving representation or ruling with empty shells?. *Irish Political Studies*, 37(2), 196-217. <https://doi.org/10.1080/07907184.2022.2046430>.

The data can be downloaded from:

<https://dataverse.harvard.edu/dataverse/harvard/?q=scarrow>

and from:

<https://www.prof.de/datenbanken-parteischiedsgerichte-und-ppdb/ppdb-database>

Acknowledgements

We acknowledge the work of Benjamin von dem Berge, without whom this data would not have been published. In addition, we are grateful for support and comments by Paul Sax, and Camila Montero.

**Content**

- 1. Variable Description..... 2**
  - 1.1 AIPD Variables ..... 3**
  - 1.2 PIPD Variables..... 5**
  - 1.3 OIPD Variables..... 6**
- 2. Countries and parties included ..... 7**
- 3. Changes between IPD Indices in PPDB Round 1 and PPDB Round 2..... 14**
- 4. Calculation of the AIPD-Index ..... 27**
- 5. Calculation of the PIPD-Index ..... 28**
- 6. Calculation of the OIPD-Index ..... 29**
- 7. Example Coding of the AIPD Index in PPDB Round 2 ..... 31**
- 8. Missing Values Analyses ..... 37**
- 9. Distribution of the AIPD with and without the programmatic component in PPDB round 2..... 41**
- 10. Distribution of the PIPD in PPDB round 2 ..... 42**
- 11. Parties from R1 that are missing in R2 ..... 43**
- References..... 43**

# 1. Variable Description

## Missing Values

For the calculation of the indices, we use “-999” in the SPSS version, “NA” in the R version and “.” in the Stata version.

## Variables

We include some base variables from the PPDB. Please refer to the PPDB codebook (Scarrow et al. 2022) for the full explanation.

Link to the codebook: <https://dataverse.harvard.edu/dataverse/harvard/?q=scarrow>

### **COUNTRY**

Label: Country name

### **CTRYID**

Label: Country ID

### **YEAR**

Label: Year

### **PTYNAME**

Label: Party name

### **PTYID**

Label: Party code

### **PARTYFAMNEW**

Label: Party family

### **VERSION**

Label: Version of the release

### **DATE**

Label: Release date

## **Core Index Variables**

AIPD

AIPD\_WM

PIPD

PIPD\_MV

OPIPD

OPIPD\_MV

### **1.1 AIPD Variables**

The AIPD index calculation is documented below. The AIPD consists of various variables which measure different aspects of intraparty democracy.

We add two versions of the index.

The standard version consists of all three components, which are the programmatic, the personnel and the organizational structure.

This version is called:

#### **AIPD**

Label: AIPD index

The second version excludes the programmatic component, due to the high number of missing values on this component. You could use this variable, if you want to make comparisons over a certain range of countries and parties (see page 30).

This version is called

#### **AIPD\_WM**

Label: AIPD index without the programmatic component.

### **Components of the AIPD index**

#### **COMP\_PROGRAMME**

The variable measures the programmatic component.

It consists of the following variables:

#### **mvaipd**

Label: Manifesto Vote AIPD

## **COMP\_PERSONNEL**

The variable measures the personnel component.

It consists of the following variables:

### **plsvaipd**

Label: Party Leader Selection Vote AIPD

### **csvaipd**

Label: Candidate Selection Vote AIPD

### **pspaipd**

Label: Party Leader Selection Vote Process AIPD

### **psveaipd**

Label: Party Leader Selection Vote Existent AIPD

### **pseaipd**

Label: Party Leader Selection Rules Existent AIPD

## **COMP\_STRUCTURE**

The variable measures the organizational component.

It consists of the following variables:

### **cvraipd**

Label: Congress Voting Rights AIPD

### **cfaipd**

Label: Congress Frequency AIPD

### **ppaaipd**

Label: Party Leader Prerogatives Accountability AIPD

### **eoseaipd**

Label: Ex-Officio Seats Executive AIPD

## **1.2 PIPD Variables**

The PIPD index consists of four variables.

We include two versions of the index. The first one includes observations with missing values.

This version is called:

### **PIPD**

Label: PIPD index

The PIPD index is more sensitive to missing values compared to the AIPD, as there are fewer variables used to calculate the index. Therefore, we also include a version of the index where only cases are included with valid values for at least two PIPD variables.

This version is called:

### **PIPD\_MV**

Label: PIPD index with less missing values

## **Variables of the PIPD index**

### **plsvpipd**

Label: Party Leader Selection Vote PIPD

### **csvpipd**

Label: Candidate Selection Vote PIPD

### **mvpipd**

Label: Manifesto Vote PIPD

### **bpvpipd**

Label: Ballot Policy Issue Vote PIPD

### **1.3 OIPD Variables**

The Open Plebiscitary Index measures how strong the inclusion of open plebiscites is within a party. The OIPD consists of four variables.

We include two versions of the index. The first one is inclusively calculated and includes observations with missing values.

The variable is called:

#### **OIPD**

Label: OIPD index

The OIPD index is more sensitive to missing values compared to the AIPD, as there are fewer variables used to calculate the index. Therefore, we also include a version of the index where only cases are included with valid values for at least two variables.

This version is called:

#### **OIPD\_MV**

Label: OIPD with less missing values

### **Variables of the OIPD Index**

#### **csvOIPD**

Label: Candidate Selection Vote OIPD

#### **plsvOIPD**

Label: Party Leader Selection Vote OIPD

#### **mvOIPD**

Label: Manifesto Vote OIPD

#### **bpvOIPD**

Label: Ballot Policy Issue Vote OIPD

## 2. Countries and parties included

The country and party codes are derived from the Political Party Database and can be used to merge the data.

Country	Party	AIPD	PIPD
Australia	Labor Party	0.63	1.00
	Liberal Party	0.51	0.00
	National Party	0.55	0.50
	The Greens	0.63	0.50
Austria	Social Democratic Party	0.58	0.33
	People's Party	0.40	0.25
	Freedom Party	0.45	0.00
	The Greens	0.64	0.67
	Peter Pilz List	0.76	0.50
	NEOS	0.78	1.00
Belgium	New Flemish Alliance	0.59	1.00
	Socialist Party	0.84	0.50
	Christian-Democrat and Flemish Reform Movement	0.73	1.00
	Socialist Party Alternative	0.46	0.50
	Open Flemish Liberals and Democrats	0.93	0.50
	Open Flemish Liberals and Democrats	0.93	1.00
	Flemish Interest	0.58	0.50
	Democrat Humanist Centre	0.61	1.00
	Ecolo	0.81	1.00
	Green	0.75	1.00
	Democratic, Federalist, Independent	0.66	0.50
	Workers' Party of Belgium	0.64	0.00
	People's Party	0.55	0.50
Botswana	Botswana Congress Party (BCP)	0.90	1.00
	Botswana Democratic Party (BDP)	0.71	0.67
Brazil	Brazilian Democratic Movement Party	0.58	0.00
	Brazilian Social Democracy Party	0.38	0.00
	Workers' Party	0.52	0.25
Bulgaria	Bulgarian Socialist Party	0.54	0.33
	Citizens for European Development of Bulgaria	0.31	0.00
	Movement for Rights and Freedoms	0.28	0.00
	Volya	0.00	n/a
Burkina Faso	People's Movement for Progress	0.57	0.00
	Union for Progress and Reform	0.48	0.33
Canada	Liberal Party	0.73	0.67
	New Democratic Party	0.71	0.67
	Conservative Party	0.71	0.75
	Green Party	0.80	0.75



Chile	Christian Democratic Party	0.31	0.67
	Independent Democratic Union	0.58	0.50
	National Renewal	0.66	0.25
	Party for Democracy	0.73	0.50
	Socialist Party	0.58	0.00
Colombia	Green Alliance	0.62	0.33
	Radical Change	0.52	0.00
	Democratic Center	0.58	0.00
	Conservative Party	0.59	0.00
	Liberal Party	0.69	0.00
	Independent Movement of Alternative Renovation	0.50	0.50
	Social Party of National Unity (Party of the U )	0.63	0.33
	Democratic Pole	0.64	0.50
Croatia	Patriotic Union	0.54	0.00
	Bridge of Independent Lists	0.45	0.00
	Civic Liberal Alliance	0.61	0.00
	Croatian Democratic Union	0.48	0.00
	Croatian Peasant Party	0.45	0.00
	Croatian People's Party – Liberal Democrats	0.36	0.00
	Human Shield	0.32	0.00
	Istrian Democratic Assembly	0.58	0.00
Czechia	Social Democratic Party of Croatia	0.55	0.00
	Social Democratic Party	0.78	0.67
	Civic Democratic Party	0.46	1.00
	TOP 09	0.44	0.00
	Communist Party	0.71	0.00
	Christian Democratic Union	0.79	0.33
Denmark	Action of Dissatisfied Citizens	0.61	0.00
	Liberals	0.69	0.00
	Social Liberal Party	0.66	0.00
	Socialist People's Party	0.49	1.00
	Conservatives	0.75	0.33
	Danish People's Party	0.78	1.00
	Red-Green Alliance	0.69	0.00
	The Alternative	0.68	0.50
Ecuador	Social Democrats	0.76	0.50
	Democratic Left	0.47	0.00
	Creating opportunities	0.59	1.00
Estonia	Social Christian Party	0.60	1.00
	Reform Party	0.79	0.00
	Social Democratic Party	0.80	1.00
	Pro Patria and Res Publica Union	0.60	1.00
	Conservative People's Party	0.78	0.00
Free Party	0.82	0.00	

Finland	Centre Party	0.66	1.00
	Finns Party	0.71	1.00
	National Coalition Party	0.57	0.50
	Social Democratic Party of Finland	0.57	0.67
	Green League	0.72	1.00
	Left Alliance	0.58	1.00
	Swedish People's Party of Finland	0.63	0.50
	Christian Democrats in Finland	0.46	0.50
France	Socialist Party	0.75	0.67
	The Republicans	0.77	0.67
	Republic on the Move	0.72	0.25
Germany	Christian Democratic Union	0.56	0.50
	Social Democratic Party	0.85	0.50
	Free Democratic Party	0.86	0.50
	The Left	0.85	0.50
	Alliance '90/The Greens	0.88	0.50
	Christian Social Union	0.62	0.50
	Alternative for Germany	0.85	0.50
Greece	Coalition of the Radical Left (Syriza)	0.55	0.25
	New Democracy (ND)	0.87	0.50
	Panhellenic Socialist Movement (PASOK)	0.46	0.50
	Communist Party of Greece (KKE)	0.51	0.00
	The River	0.54	0.00
	Independent Greeks (ANEL)	0.75	0.33
Hungary	Fidesz - Hungarian Civic Alliance	0.45	0.33
	Jobbik	0.74	0.00
	Politics Can Be Different	0.75	0.50
	Socialist Party	0.90	0.67
	Democratic Coalition	0.82	0.75
Ireland	Fine Gael	0.78	0.50
	Fianna Fáil	0.67	0.50
	Sinn Féin	0.72	0.50
	Labour Party	0.69	1.00
	Green Party	0.40	0.67
	Social Democrats	0.72	1.00

Israel	Likud	0.59	1.00
	Yisrael Beiteinu	0.37	0.00
	Labor Party	0.74	1.00
	Shas	0.08	0.00
	Agudat Yisrael	0.06	0.00
	Hadash	0.38	0.00
	Meretz	0.67	0.33
	The Jewish Home	0.73	0.50
	Balad	0.88	0.00
	There is a Future	0.42	0.00
	All of Us	0.71	0.00
	The Movement	0.46	0.00
Italy	Northern League	0.63	0.00
	Democratic Party	0.72	0.33
	Italian Force	0.50	0.00
	Five Stars Movement	0.94	0.75
	Brothers of Italy	0.58	0.00
Japan	Democratic Party	0.54	0.00
	Komeito	0.59	0.00
	Social Democratic Party	0.32	0.00
	Communist Party	0.5	n/a
	Social Democratic Party	0.32	0
	Nippon Ishin	0.28	n/a
	The Constitutional Democratic Party of Japan	0.31	n/a
The Party of Hope	0.75	n/a	
Kenya	Orange Democratic Movement	0.49	0.50
	Jubilee Party of Kenya	0.73	0.33
Lithuania	Order and Justice	0.80	0.33
	Electoral Action of Poles in Lithuania – Christian Families Alliance	0.72	0.00
	Social Democratic Labour Party of Lithuania	0.81	0.00
	Social Democratic Party of Lithuania	0.79	0.33
	Lithuanian Farmers and Greens Union	0.64	0.00
	Homeland Union - Lithuanian Christian Democrats	0.94	0.33
	Labour Party	0.76	0.00
	Liberal Movement	0.55	0.00
Malawi	Democratic Progressive Party (DPP)	0.58	0.00
	Malawi Congress Party	0.58	1.00
Mexico	Ecological Green Party	0.82	0.75
	Institutional Revolutionary Party	0.79	1.00
	National Regeneration Movement	0.63	1.00
	National Action Party	0.79	1.00
	Party of the Democratic Revolution	0.77	0.67
Namibia	Popular Democratic Movement [PDM]	0.50	0.00
	South West Africa People's Organisation [SWAPO]	0.70	0.33

	People's Party for Freedom and Democracy	0.83	0.75
	Labour Party	0.85	0.50
	Socialist Party	0.60	0.00
	Christian Democratic Appeal	0.84	0.50
	Democrats 66	0.91	0.75
Netherlands	Christian Union	0.73	0.00
	Green Left	0.84	0.75
	Reformed Political Party	0.76	0.00
	Party for the Animals	0.68	1.00
	50PLUS	0.55	0.00
	Forum for Democracy	0.65	0.00
Nigeria	All Progressive Congress	0.66	1.00
	Peoples Democratic Party	0.70	1.00
	Labour Party	0.70	0.25
	Progress Party	0.74	0.25
	Conservative Party	0.76	0.00
	Socialist Left Party	0.72	0.25
Norway	Centre Party	0.72	0.00
	Christian Democratic Party	0.71	0.00
	Liberal Party	0.77	0.25
	The Greens	0.79	0.50
	Red	0.74	0.00
	Popular Action	0.74	0.33
	Alliance for Progress	0.38	0.00
	Aprista Peruvian Party	0.74	0.00
Peru	Broad Front for Justice, Life, and Freedom	0.74	0.33
	Popular Force	0.66	0.00
	Peruvians for Change	0.74	0.00
	Civic Platform	0.61	0.50
	Law and Justice	0.68	0.00
	Polish People's Party	0.68	0.00
Poland	Democratic Left Alliance	0.66	0.67
	Kukiz'15	0.53	0.00
	Modern (Nowoczesna)	0.85	0.00
	Social Democratic Party	0.80	0.67
	Socialist Party	0.78	0.67
	People's Party	0.69	0.00
Portugal	Left Bloc	0.72	0.00
	Communist Party	0.67	0.00
	People-Animals-Nature	0.71	0.00
	Chinese Nationalist Party	0.84	0.67
	Democratic Progressive Party	0.90	0.75
Taiwan	People's First Party	0.78	0.50
	New Power Party	0.66	0.00

	Democratic Party	0.62	0.33	
	Dveri	0.60	0.00	
Serbia	Socialist Party of Serbia	0.53	0.00	
	Serbian Progressive Party	0.62	0.33	
	Serbian Radical Party	0.63	0.00	
	Alliance of Vojvodina Hungarians	0.55	0.00	
	Social Democratic Party	0.70	0.67	
	National Liberal Party	0.67	0.67	
Romania	Democratic Alliance of Hungarians in Romania	0.69	0.67	
	Alliance of Liberals and Democrats	0.69	0.67	
	Save Romania Union	0.69	0.67	
Slovakia	Progressive Slovakia	0.41	1.00	
	People's Party	0.40	0.00	
	Socialist Party	0.63	0.50	
	United Left	0.68	0.50	
Spain	Basque Nationalist Party	0.41	0.00	
	PDECAT -European Democratic Party of Catalonia	0.69	0.75	
	We can	0.57	1.00	
	Citizens	0.58	0.67	
	Republican Left of Catalonia	0.47	0.50	
South Africa	African National Congress	0.72	0.00	
	Democratic Alliance	0.67	0.00	
South Korea	Democratic Party	0.70	0.75	
	Liberal Korea Party	0.53	1.00	
	Social Democrats	0.58	0.33	
	Left Party	0.72	0.33	
	Green Party	0.65	0.33	
Sweden	Centre Party	0.65	0.00	
	Liberal Party	0.63	0.00	
	Christian Democrats	0.65	0.00	
	Moderate Party	0.58	0.00	
	Sweden Democrats	0.65	0.00	
	Christian Democratic People's Party	0.77	0.25	
Switzerland	The Liberals	0.79	0.25	
	Swiss Socialist Party	0.81	0.25	
	Swiss People's Party/Democratic Union of the Centre	0.76	0.00	
Tanzania	Party for Democracy and Progress	0.57	0.33	
	Party of the Revolution	0.43	0.33	
Uganda	National Resistance Movement [NRM]	0.29	1.00	
	Forum for Democratic Change	0.13	n/a	

	Conservative Party	0.59	1.00
	Labour Party	0.67	0.67
United Kingdom	Liberal Democrats	0.42	0.75
	Scottish National Party	0.75	1.00
	Plaid Cymru	0.88	1.00
	Green Party	0.97	1.00
	UK Independence Party	0.70	1.00
United States	Democrats	0.38	n/a
	Republicans	0.30	n/a
Zambia	Patriotic Front (PF)	0.44	0.50
	United Party for National Development (UNDP)	0.60	0.00

### 3. Changes between IPD Indices in PPDB Round 1 and PPDB Round 2

The IPD-index of round 2 (based on PPDB data, Scarrow et al. 2022) is based on some different variables, as the composition of the PPDB slightly changed (see for the composition of the first round von dem Berge & Poguntke 2016). All changes are attributed to the transformation of the open questions in round 1 (Poguntke et al. 2020) into closed questions in round 2. These variables deal with the influence of different party bodies on the candidate and the party leader selection. The table below denotes the change of all variables and the new configuration. One variable (PartyLeader-Selection-Vote-Process) changed because some former PPDB variables are no longer available in round two. Originally these items measured whether party officials were eligible to take part in the vote of the party leader selection by the virtue of their position. The underlying logic of the new indicator is somewhat different because the new variables measure whether a party body (e. g. a national party body or national party leaders) plays a role in suggesting or proposing leadership candidates for a party. However, this captures the originally intended aspect: the involvement of different official party bodies in the selection of the party leadership. The following table denotes the change of all variables and the new composition of the index. PIPD variables are presented in green. OIPD variables are presented in blue.

Quantification logic from von dem Berge & Poguntke 2016: 2, *PPDB-Question: Who has a vote on adopting the final manifesto?*

PPDB-answer-option	IPD-Value	Effect on IPD
Party Congress	1.00 (max IPD, most “inclusive”)	Pro IPD
Party Sub-Units	0.75	
Party Legislators	0.50	Not explicitly pro/contra IPD
Executive Committee	0.25	Contra IPD
Party Leader	0.00 (min IPD, least “inclusive”)	

IPD-Component	PPDB-Items Round 1	PPDB-Items Round 2	Changes	Quantification	Comments
Organizational Structure	<i>IPD-Variable: Congress_VotingRights_AIPD (cvrAIPD)</i>				
	Opening Question: CR35CONNUM: How many national party congresses were held in the past year? 0. None / 1. One / 2. two or more	Opening Question: Which of the following were eligible to vote at this congress? (C119CONVOT1 – C123CONVOT5)	CR35CONNUM is no longer part of the PPDB and was not substituted for the rest only the variable names changed.		The AIPD-Variable is based on a ranking of the items (0.25/0.50/0.75). The final value of this variable equals the highest value of the individual items. There is no 0.00-value because the “national organization” (B25) can also be a “delegate meeting” and is not necessarily the “national leadership” (therefore: 0.25).
	<u>CR42CON1D</u> : Which of the following were eligible to vote at this congress? Delegates sent from local parties 1. Yes / 2. No	C119CONVOT1: Voting eligible: Delegates sent from local parties. 1. Yes 2. No		0.75	
	<u>CR43CON1E</u> : Which of the following were eligible to vote at this congress? Delegates sent from regional parties 1. Yes / 2. No	C120CONVOT2: Voting eligible: Delegates sent from regional parties. 1. Yes 2. No		0.50	
	<u>CR44CON1F</u> : Which of the following were eligible to vote at this congress? All party members in attendance 1. Yes / 2. No	C121CONVOT3: Voting eligible: All party members in attendance. 1. Yes 2. No -888. Missing -999. NA		1.00	
	<u>CR45CON1G</u> : Which of the following were eligible to vote at this congress? All party members, whether in attendance or not (internet voting, for instance) 1. Yes / 2. No	C122CONVOT4: Voting eligible: All party members, whether in attendance or not (internet voting, for instance). 1. Yes 2. No		1.00	



IPD-Component	PPDB-Items Round 1	PPDB-Items Round 2	Changes	Quantification	Comments
Organizational Structure	<b><i>IPD-Variable: Ex-Officio-Seats_Executive_AIPD (eoseAIPD) Which of the following sit as ex officio members with full voting rights on the party's highest executive body?</i></b>				
	A85EXCSTATE: Leaders of state/provincial or regional parties. 1. Yes / 2. No	A85EXCSTATE: Leaders of state/provincial or regional parties. 1. Yes / 2. No	nothing changed	Yes = 0.25 No = 0.75 We generate one variable out of all these items with the arithmetic mean of the quantification of all items. This means that we sum up the values across items A85 to A89 and divide the result by the number of items (most of the time: 4; in presidential and semi-presidential systems: 5).	Having ex-officio members with full voting rights in the party's highest executive body of a party is exclusive (and therefore contra IPD) because to be inclusive the highest executive body has to be elected (e.g. by the congress) and only the elected members should have voting rights. However, as the items do not consider the precise number of ex-officio-seats, neither the minimum value (0.00) nor maximum (1.00) value is assigned here.
	A86EXCPM: The prime minister or chancellor, when s/he is a member of this party. 1. Yes / 2. No	A86EXCPM: The prime minister or chancellor, when s/he is a member of this party. 1. Yes / 2. No			
	A87EXCPRES: The president (in presidential or semi-presidential systems), when s/he is a member of this party.	A87EXCPRES: The president (in presidential or semi-presidential systems), when s/he is a member of this party.			
	A88EXCMIN: Government ministers, when they are members of this party. 1. Yes / 2. No	A88EXCMIN: Government ministers, when they are members of this party. 1. Yes / 2. No			
	A89EXCPPG: Leader of the party group in the lower house of the legislature. 1. Yes / 2. No	A89EXCPPG: Leader of the party group in the lower house of the legislature. 1. Yes / 2. No			

IPD-Component	PPDB-Items Round 1	PPDB-Items Round 2	Changes	Quantification	Comments
<i>IPD-Variable: Congress_Frequency_AIPD (cfAIPD)</i>					
Organizational Structure	A78CONFREQ: According to the party statutes, how frequently MUST a party congress be held? In number of years.	A78CONFREQ: According to the party statutes, how frequently MUST a party congress be held? In number of years.	nothing changed	1 x 1 year or more = 1.00 1 x 2 years = 0.50 1 x 3 years = 0.25 1 x 4 years or less = 0.00 Not specified = 0.00	The quantification is based on a ranking of the items (from 0.00 to 1.00). The items are ordered in a way that the highest value (1.00) is given to the most inclusive way of decision-making.

IPD-Component	PPDB-Items Round 1	PPDB-Items Round 2	Changes	Quantification	Comments
Decision-Making: Personnel	<i>IPD-Variables:</i> <i>1) Candidate_Selection_Vote_AIPD (csvAIPD), 2) Candidate_Selection_Vote_PIPD (csvPIP)</i>				
	B22CANRUL2TXT: Individual Members PIPD-Variable: Candidate_Selection_Vote_PIPD	B22CANSELC Do individual members play a role in Selecting/Deciding on candidates? 1. Yes / 2. No	The original variables are no longer open questions but closed. This reduces coder bias but could explain some differences between the IPD- Index in R1 and the IPD- Index in R2.	Yes = 1, No = 0	The AIPD-Variable is based on a ranking of the items (0.25/0.50/0.75). The final value of this variable equals the highest value of the individual items. There is no 0.00-value because the “national organization” (B25) can also be a “delegate meeting” and is not necessarily the “national leadership” (therefore: 0.25).
	B23CANRUL3TXT: local level organization (delegate meeting and/or local leadership)	B23CANSELC Do local level organizations (meeting and/or local leadership) play a role in Selecting/Deciding on candidates? 1. Yes / 2. No		0.75	
	B24CANRUL4TXT: regional organization (delegate meeting and/or regional leadership)	B24CANSELC Do regional/state organizations (meeting and/or regional leadership) play a role in Selecting/Deciding on candidates? 1. Yes / 2. No		0.50	
	B25CANRUL5TXT: national organization (delegate meeting and/or national Leadership)	B25ACANSELC Does a national party collective body (e.g., Party Congress or National Executive) play a role in Selecting/Deciding on candidates? 1. Yes / 2. No		0.25	

IPD-Component	PPDB-Items Round 1	PPDB-Items Round 2	Changes	Quantification	Comments
Decision-Making: Programme (and Issues)	<i><b>IPD-Variable: Ballot_PolicyIssue_Vote_PIPD (bpvPIPD)</b></i>				
	<p>C8REF8 According to the statutes, which of the following are eligible to vote in these intra-party policy ballots?</p> <p>1. Members / 2. Members plus other registered supporters / 3. All voters / 4. Procedure not specified in party statutes</p>	<p>C8REF8 According to the statutes, which of the following are eligible to vote in these intra-party policy ballots?</p> <p>1. Members / 2. Members plus other registered supporters / 3. All voters / 4. Procedure not specified in party statutes</p>	nothing changed	<p>Members (1) = 1 2,3,4 = 0</p>	
	<i><b>IPD-Variable: Ballot_PolicyIssue_Vote_OPIPD (bpvOPIPD)</b></i>				
<p>C8REF8 According to the statutes, which of the following are eligible to vote in these intra-party policy ballots?</p> <p>1. Members / 2. Members plus other registered supporters / 3. All voters / 4. Procedure not specified in party statutes</p>	<p>C8REF8 According to the statutes, which of the following are eligible to vote in these intra-party policy ballots?</p> <p>1. Members / 2. Members plus other registered supporters / 3. All voters / 4. Procedure not specified in party statutes</p>	nothing changed	<p>Members plus supporters (2) = 1 All voters (3) = 1 1, 4 = 0</p>		

IPD-Component	PPDB-Items Round 1	PPDB-Items Round 2	Changes	Quantification	Comments
<i>IPD-Variable: PartyLeader_Prerogatives/Accountability_AIPD (ppaAIPD)</i>					
Organizational Structure	C15LDRSUM1 Party statutes give the party leader the right to summon party officials. 1. Yes / 2. No	C15LDRSUM1 Party statutes give the party leader the right to summon party officials. 1. Yes / 2. No	nothing changed	Yes = 0.00 No = 1.00	We generate one variable out of all these items with the arithmetic mean of the quantification of all items. This means that we sum up the values across the items C15, C16, C18, C19, A90 and divide the result by the number of items (which is 5).
	C16DRSUM2 Party statutes give the party leader the right to summon the party congress. 1. Yes / 2. No	C16DRSUM2 Party statutes give the party leader the right to summon the party congress. 1. Yes / 2. No		Yes = 0.00 No = 1.00	
	C18LDRROLE2 Party statutes explicitly mention that the party leader is accountable to the party executive or party congress. 1. Yes / 2. No	C18LDRROLE2 Party statutes explicitly mention that the party leader is accountable to the party executive or party congress. 1. Yes / 2. No		Yes = 1.00 No = 0.00	
	C19LDRROLE3 Party statutes explicitly mention that the national party can only enter coalition agreements with the consent of the party leader. 1. Yes / 2. No	C19LDRROLE3 Party statutes explicitly mention that the national party can only enter coalition agreements with the consent of the party leader. 1. Yes / 2. No		Yes = 0.00 No = 1.00	
	A90EXCLDR: According to party rules, how many members of the highest party executive may the party leader directly appoint?	A90EXCLDR: According to party rules, how many members of the highest party executive may the party leader directly appoint?		more than 1 = 0.00 one = 0.5 none = 1.00	

IPD-Component	PPDB-Items Round 1	PPDB-Items Round 2	Changes	Quantification	Comments
Decision-Making: Personnel	<i>IPD-Variable: (1) PartyLeader_Selection_Vote_AIPD (plsvAIPD)</i>				
	C26PLOCTXT: Role of local organization (eg. Delegate meeting and/or Local Leadership) [Text] OR “No Role”	C41PLSELC: Do local level organizations (meeting and/or local leadership) play a role in Selecting/Deciding on leadership candidates? A. Yes B. No	The original variables are no longer open questions but closed. This reduces coder bias but could explain some differences between the IPD-Index in R1 and the IPD-Index in R2.	0.75	The AIPD-Variable is based on a ranking of the items (0.00/0.25/0.50/0.75). The final value of this variable equals the highest value of the individual items. The items are ordered in a way that the highest value (here: 0.75) is given to the most inclusive way of decision-making. There is no 0.00-value because the “national organization” (C28) can also be a “delegate meeting” and is not necessarily the “national leadership” (therefore: 0.25).
	C27PLREGTXT: Role of regional organization (eg. Delegate meeting and/or Regional Leadership) [Text] OR “No Role”	C42PLSELC: Do regional/state organizations (meeting and/or regional leadership) play a role in Selecting/Deciding on leadership candidates? A. Yes B. No		0.50	
	C28PLNATTXT: Role of national organization (eg. Delegate meeting and/or National Leadership) [Text] OR “No Role”	C43APLSELC: Does a national party collective body (e.g., Party Congress or National Executive) play a role in Selecting/Deciding on leadership candidates? A. Yes B. No		0.25	

IPD-Component	PPDB-Items Round 1	PPDB-Items Round 2	Changes	Quantification	Comments
Decision-Making: Personnel	<p><i>IPD-Variables:</i>  (2) <i>PartyLeader_Selection_Vote_PIPD (plsvPIPD)</i>  (3) <i>PartyLeader_Selection_Vote_OPIP (plsvOPIP)</i></p>				
	C25PLMBRTXT: Role of Individual Members [Text] OR “No Role” OR -999. Not applicable PIP-D-Variable: PartyLeader_Selection_Vote_PIPD	C40PLSELC: Do individual members play a role in Selecting/Deciding on leadership candidates? A. Yes B. No -888. Missing -999. NA	The original variables are no longer open questions but closed. This reduces coder bias but could explain some differences between the IPD- Index in R1 and the IPD- Index in R2.	Yes = 1, No = 0	
C29PLSPTXT: Role of non-member supporters Not necessarily “final” vote. “Vote” is sufficient. [Text] OR “No Role” OR -999. Not applicable OPIP-D-Variable: PartyLeader_Selection_Vote_OPIP	C45PLSELC: Do non-member supporters play a role in Selecting/Deciding on leadership candidates? A. Yes B. No -888. Missing -999. NA	Yes = 1, No = 0			

IPD-Component	PPDB-Items Round 1	PPDB-Items Round 2	Changes	Quantification	Comments
Decision-Making: Personnel	<b><i>IPD-Variable: PartyLeader_SelectionRules_Existent_AIPD (pseAIPD)</i></b>				
	C24PLRULE: Are there formal party rules setting out the process for selecting the holder of this position? 1. Yes, in party statutes 2. Not entirely spelled out in statutes, but rules were created for this year's process 3. There were no written rules 4. There were written rules, but they were not followed this year	C24PLRULE: Are there formal party rules setting out the process for selecting the holder of this position? 1. Yes, in party statutes 2. Not entirely spelled out in statutes, but rules were created for this year's process 3. There were no written rules 4. There were written rules, but they were not followed this year	nothing changed	Yes = 1.00 Not entirely but = 0.50 No Rules = 0.00 Rules, but not followed = 0.25	Rules are pro IPD (inclusive) because if there are no rules, everything is in the hands of the elites.
	<b><i>IPD-Variable: PartyLeader_SelectionVote_Existent_AIPD (psveAIPD)</i></b>				
C40PLVT1: There was a vote (advisory or binding) at the most inclusive stage of the leadership selection process. 1. Yes / 2. No	C40PLVT1: There was a vote (advisory or binding) at the most inclusive stage of the leadership selection process. 1. Yes / 2. No	nothing changed	Yes = 1.00 No = 0.00	It is inclusive if there was a vote (therefore: 1.00), and it is not inclusive if there was no vote (therefore: 0.00).	



IPD-Component	PPDB-Items Round 1	PPDB-Items Round 2	Changes	Quantification	Comments
<b><i>IPD-Variable: PartyLeader_SelectionVote_Process_AIPD (pspAIPD)</i></b>					
Decision-Making: Personnel	C44PLVT5: All party congress delegates. 1. Yes / 2. No	C41PLSELA: Do local level organizations (meeting and/or local leadership) play a role in suggesting/proposing leadership candidates for party consideration? A. Yes B. No	The original variables are no longer available in Round 2. The underlying logic of the new variable is somewhat different (Does party body x play a role in suggesting/proposing leadership candidates for party consideration?). However, it captures the originally intended aspect: the involvement of different party bodies in the selection of the party leadership.	1	The AIPD-Variable is based on a ranking of the items (0.00/0.25/0.50/1.00). The final value of this variable equals the highest value of the individual items. The items are ordered in a way that the highest value (here: 1.00) is given to the most inclusive way of decision-making. There is no 0.00-value because it is not entirely exclusive when all members of the executive committee decide on their chairman. It would be the minimum value 0.00, if the former party leader appointed his successor alone.
	C46PLVT7: All local party leaders. 1. Yes / 2. No	C42PLSELA: Do regional/state organizations (meeting and/or regional leadership) play a role in suggesting/proposing leadership candidates for party consideration? A. Yes B. No		0.75	
	C45PLVT6: Regional party leaders. 1. Yes / 2. No	C43APLSELA: Does a national party collective body (e.g., Party Congress or National Executive) play a role in suggesting/proposing leadership candidates for party consideration? A. Yes B. No		0.50	
	C42PLVT3: All party legislators. 1. Yes / 2. No				
	C41PLVT2: All members of the party's highest-level executive committee. 1. Yes / 2. No	C43BPLSELA Does/do the National Party Leader(s) play a role in suggesting/proposing leadership candidates for party consideration? A. Yes B. No		0.25	

IPD-Component	PPDB-Items Round 1	PPDB-Items Round 2	Changes	Quantification	Comments
Decision-Making: Programme	<p><i>IPD-Variables:</i>  <i>(1) Manifesto_Vote_AIPD (mvAIPD)</i>  <i>Role played by each of the following in formulating the party's election manifesto. Formal Input means that there were organized opportunities for the groups to influence the outcome through suggestions and discussion. Vote means having a vote on adopting the final manifesto.</i></p>				
	C101MAN2: Role of the party leader and/or a drafting committee directly appointed by him/her: 1. Formal Input / 2. Vote / 3. A and B / 4. Neither A or B / 5. Other	C101MAN2: Role of the party leader and/or a drafting committee directly appointed by him/her: 1. Formal Input / 2. Vote / 3. A and B / 4. Neither A or B / 5. Other	nothing changed	0	The AIPD-Variable is based on a ranking of the items (0.00/0.25/0.50/1.00). The final value of this variable equals the highest value of the individual items. The items are ordered in a way that the highest value (here: 1.00) is given to the most inclusive way of decision-making.
	C102MAN3: Role of national executive committee. 1. Formal Input / 2. Vote / 3. A and B / 4. Neither A or B / 5. Other	C102MAN3: Role of national executive committee. 1. Formal Input / 2. Vote / 3. A and B / 4. Neither A or B / 5. Other		0.25	
	C103MAN4: Role of parliamentary party. 1. Formal Input / 2. Vote / 3. A and B / 4. Neither A or B / 5. Other	C103MAN4: Role of parliamentary party. 1. Formal Input / 2. Vote / 3. A and B / 4. Neither A or B / 5. Other		0.50	
	C104MAN5: Party congress delegates. 1. Formal Input / 2. Vote / 3. A and B / 4. Neither A or B / 5. Other	C104MAN5: Party congress delegates. 1. Formal Input / 2. Vote / 3. A and B / 4. Neither A or B / 5. Other		1.00	

IPD-Component	PPDB-Items Round 1	PPDB-Items Round 2	Changes	Quantification	Comments
Decision-Making: Programme	<p><i>IPD-Variables:</i></p> <p><i>(2) Manifesto_Vote_PIPD (mvPIPD)</i></p> <p><i>(3) Manifesto_Vote_OPIPD (mvOPIPD)</i></p> <p><i>Role played by each of the following in formulating the party's election manifesto. Formal Input means that there were organized opportunities for the groups to influence the outcome through suggestions and discussion. Vote means having a vote on adopting the final manifesto.</i></p>				
	<p>C105MAN6: Party members 1. Formal Input / 2. Vote / 3. A and B / 4. Neither A or B / 5. Other</p>	<p>C105MAN6: Party members 1. Formal Input / 2. Vote / 3. A and B / 4. Neither A or B / 5. Other</p>	nothing changed	<p>Yes (answer option 2 or 3) = 1 No = 0</p>	
	<p>C106MAN7: Non-member party supporters 1. Formal Input / 2. Vote / 3. A and B / 4. Neither A or B / 5.</p>	<p>C106MAN7: Non-member party supporters 1. Formal Input / 2. Vote / 3. A and B / 4. Neither A or B / 5.</p>		<p>Yes (answer option 2 or 3) = 1 No = 0</p>	

## 4. Calculation of the AIPD-Index

IPD-Component	Decision-Making: Programme	Decision-Making: Personnel	Organizational Structure
IPD-Variables (PPDB-items)	Manifesto_Vote_AIPD ( <i>mvAIPD</i> ) (C101MAN2, C102MAN3, C103MAN4, C104MAN5)	PartyLeader_SelectionRules_Existent_AIPD ( <i>pseAIPD</i> ) (C24PLRULE)	Congress_VotingRights_AIPD ( <i>cvrAIPD</i> ) (C119CONVOT1 – C123CONVOT5)
		PartyLeader_Selection_Vote_AIPD ( <i>plsvAIPD</i> ) (C41PLSELC, C42PLSELC, C43APLSELC)	PartyLeader_Selection_mean (mean of all “Party-Leader-Variables”)
		PartyLeader_SelectionVote_Existent_AIPD ( <i>psveAIPD</i> ) (C40PLVT1)	Congress_Frequency_AIPD ( <i>cfAIPD</i> ) (A78CONFREQ)
		PartyLeader_SelectionVote_Process_AIPD ( <i>pspAIPD</i> ) (C41PLSELA, C42PLSELA, C43APLSELA, C43BPLSELA)	Ex-Officio-Seats_Executive_AIPD ( <i>eoseAIPD</i> ) (A85EXCSTATE, A86EXCPM, A87EXCPRES, A88EXCMIN, A89EXCPPG)
		Candidate_Selection_Vote_AIPD ( <i>csvAIPD</i> ) (B22CANSELC, B23CANSELC, B24CANSELC, B25ACANSELC)	PartyLeader_Prerogatives/Accountability_AIPD ( <i>ppaAIPD</i> ) (C15LDRSUM1, C16DRSUM2, C18LDRROLE2, C19LDRROLE3, A90EXCLDR)

$$comp\_programme = \text{Manifesto Vote AIPD}(mvAIPD)$$

$$comp\_personnel = \frac{\text{Party Leader Selection Mean} + \text{Candidate Selection Vote AIPD}(csvAIPD)}{N \text{ Variables Component}}$$

$$comp\_structure = \frac{\text{Congress Voting Rights}(cvrAIPD) + \text{Congress Frequency}(cfAIPD) + \text{ExOfficioSeatsExecutive}(eoseAIPD) + \text{PartyLeader Prerogatives Accountability}(ppaAIPD)}{N \text{ Variables Component}}$$

$$AIPD = \frac{comp\ programme + comp\ personnel + comp\ structure}{N \text{ components}}$$

## 5. Calculation of the PIPD-Index

IPD-Component	IPD-Variables (PPDB-items)
<b>Decision-Making: <i>Programme and issues</i></b>	Manifesto_Vote_PIPD ( <i>mvPIP</i> D) (C105MAN6)
	Ballot_PolicyIssue_Vote_PIPD ( <i>bpvPIP</i> D) (C8REF8)
<b>Decision-Making: <i>Personnel</i></b>	PartyLeader_Selection_Vote_PIPD ( <i>plsvPIP</i> D) (C40PLSELC)
	Candidate_Selection_Vote_PIPD ( <i>csvPIP</i> D) (B22CANSELC)
<b>Organizational Structure</b>	--- no items/variables ---

$$PIP D = \frac{\text{Manifesto Vote PIPD (mvPIP D)} + \text{Ballot PolicyIssue Vote PIPD (bpvPIP D)} + \text{PartyLeader Selection Vote PIPD (plsvPIP D)} + \text{Candidate Selection Vote PIPD (csvPIP D)}}{N \text{ Variables}}$$

## 6. Calculation of the OIPD-Index

IPD-Component	IPD-Variables (PPDB-items)
<b>Decision-Making: <i>Programme and issues</i></b>	Manifesto_Vote_OIPD ( <i>mvOIPD</i> ) (C106MAN7)
	Ballot_PolicyIssue_Vote_OIPD ( <i>bpvOIPD</i> ) (C8REF8)
<b>Decision-Making: <i>Personnel</i></b>	PartyLeader_Selection_Vote_OIPD ( <i>plsvOIPD</i> ) (C29PLSUPTXT)
<b>Organizational Structure</b>	--- no items/variables ---

$$OIPD = \frac{\text{Manifesto Vote OIPD (mvOIPD)} + \text{Ballot PolicyIssue Vote (bpvOIPD)} + \text{PartyLeader Selection Vote OIPD (plsvOIPD)} + \text{Candidate Selection Vote OIPD (csvOIPD)}}{N \text{ Variables}}$$

## Further notes

### Problems regarding missing values

The variables C101MAN2 - C106MAN7 show several missing values. In total 131 parties are lacking values regarding the rules how manifestos are formulated. To counter this problem a second AIPD-Index is calculated that only consists of the dimensions "Decision-Making: Personnel" and "Organizational-Structure" (AIPD\_WM). Both indices are highly correlated with each other ( $r=0.82$ ).

The component Decision-Making Programme is missing completely in the following countries: Australia, Belgium, Canada, Finland, Japan, Chile, Romania, USA, Slovakia, South Africa, Latvia, Zambia, Namibia, Uganda

The component is missing partially in the following countries: Austria, Israel, Italy, Spain, Sweden, United Kingdom, Brazil, Bulgaria, Colombia, Croatia, Estonia, Botswana, Tanzania, Serbia, Zimbabwe, Denmark, Ireland

The component is available: Czech Republic, France, Germany, Hungary, Netherlands, Norway, Poland, Spain, Mexico, Greece, Peru, Lithuania, Switzerland

The PIPD is more sensitive to missing values compared to the AIPD, as there are fewer variables used to calculate the index. Therefore, we also include a version of the index where only cases are included with valid values for at least two PIPD variables. There are 39 parties that are excluded through this calculation. Most of the excluded cases had the value 0. However, we suggest also to control which version is the best for your own case selection. You can use the PIPD variables to generate further versions of the index.

The most missing values can be found in: Israel, Japan, Estonia, Denmark, Ecuador, Malawi, Slovakia, Uganda

The variable is completely missing in: USA, Latvia, Zimbabwe

## 7. Example Coding of the AIPD Index in PPDB Round 2

Following we present a coding example for the IPD-Index using the German Christian Democrats (CDU). The following table displays how the IPD variables are coded from the PPDB variables.

PPDB-Variable	German CDU PPDB	IPD Coding	
<b>IPD-Variable: Congress_VotingRights_AIPD (cvrAIPD)</b>			
C119CONVOT1: Voting eligible: Delegates sent from local parties. 1. Yes 2. No -888. Missing -999. NA	Yes	0.75	<b>0.75</b>
C120CONVOT2: Voting eligible: Delegates sent from regional parties. 1. Yes 2. No -888. Missing -999. NA	No	0	
C121CONVOT3: Voting eligible: All party members in attendance. 1. Yes 2. No -888. Missing -999. NA	No	0	
C122CONVOT4: Voting eligible: All party members, whether in attendance or not (internet voting, for instance). 1. Yes 2. No -888. Missing -999. NA	No	0	
<b>IPD-Variable: Congress_Frequency_AIPD (cfAIPD)</b>			
A78CONFREQ: According to the party statutes, how frequently MUST a party congress be held? In number of years.	2	0.5	<b>0.5</b>
<b>IPD-Variable: Ex-Officio-Seats_Executive_AIPD (eoseAIPD) Which of the following sit as ex officio members with full voting rights on the party's highest executive body?</b>			
A85EXCSTATE: Leaders of state/provincial or regional parties. 1. Yes / 2. No	No	0.75	<b>0.55</b>
A86EXCPM: The prime minister or chancellor, when s/he is a member of this party. 1. Yes / 2. No	Yes	0.25	
A87EXCPRES: The president (in presidential or semi-presidential systems), when s/he is a member of this party.	No	0.75	
A88EXCMIN: Government ministers, when they are members of this party. 1. Yes / 2. No	No	0.75	
A89EXCPPG: Leader of the party group in the lower house of the legislature. 1. Yes / 2. No	Yes	0.25	



IPD-Variable: Candidate_Selection_Vote_AIPD (csvAIPD)			
<p>B23CANSELC Do local level organizations (meeting and/or local leadership) play a role in Selecting/Deciding on candidates?  A. Yes  B. No  -888. Missing  -999. NA</p>	Yes	0.75	<b>0.75</b>
<p>B24CANSELC  Do regional/state organizations (meeting and/or regional leadership) play a role in Selecting/Deciding on candidates?  A. Yes  B. No  -888. Missing  -999. NA</p>	No	0	
<p>B25ACANSELC  Does a national party collective body (e.g., Party Congress or National Executive) play a role in Selecting/Deciding on candidates?  A. Yes  B. No  -888. Missing  -999. NA</p>	No	0	

<b>IPD-Variable: PartyLeader_Prerogatives/Accountability_AIPD (ppaAIPD)</b>			
C15LDRSUM1 Party statutes give the party leader the right to summon party officials. 1. Yes / 2. No / -999. NA	No	1	<b>1</b>
C16DRSUM2 Party statutes give the party leader the right to summon the party congress. 1. Yes / 2. No / -999. NA	No	1	
C18LDRROLE2 Party statutes explicitly mention that the party leader is accountable to the party executive or party congress. 1. Yes / 2. No / -999. NA	Yes	1	
C19LDRROLE3 Party statutes explicitly mention that the national party can only enter coalition agreements with the consent of the party leader. 1. Yes / 2. No / -999. NA	No	1	
A90EXCLDR: According to party rules, how many members of the highest party executive may the party leader directly appoint? -999. NA	0	1	
<b>IPD-Variable: PartyLeader_SelectionRules_Existent_AIPD (pseAIPD)</b>			
C24PLRULE: Are there formal party rules setting out the process for selecting the holder of this position? 1. Yes, in party statutes 2. Not entirely spelled out in statutes, but rules were created for this year's process 3. There were no written rules 4. There were written rules, but they were not followed this year -999. NA	Yes, in party statutes	1	<b>1</b>
<b>IPD-Variable: PartyLeader_SelectionVote_Existent_AIPD</b>			
C40PLVT1: There was a vote (advisory or binding) at the most inclusive stage of the leadership selection process. 1. Yes / 2. No / -999. NA	Yes	1	<b>1</b>

IPD-Variable: PartyLeader_Selection_Vote_AIPD (plsvAIPD)			
C41PLSELC: Do local level organizations (meeting and/or local leadership) play a role in Selecting/Deciding on leadership candidates? A. Yes B. No -888. Missing -999. NA	No	0	<b>0.25</b>
C42PLSELC: Do regional/state organizations (meeting and/or regional leadership) play a role in Selecting/Deciding on leadership candidates? A. Yes B. No -888. Missing -999. NA	No	0	
C43APLSELC: Does a national party collective body (e.g., Party Congress or National Executive) play a role in Selecting/Deciding on leadership candidates? A. Yes B. No -888. Missing -999. NA	Yes	0.25	
C45PLSELC: Does the national party leader play a role in Selecting/Deciding on leadership candidates? A. Yes B. No -888. Missing -999. NA	No	0	

<b>IPD-Variable: PartyLeader_SelectionVote_Process_AIPD (pspAIPD)</b>			
C41PLSELA: Do local level organizations (meeting and/or local leadership) play a role in suggesting/proposing leadership candidates for party consideration? A. Yes B. No -888. Missing -999. NA. Quantification in AIPD Round 2: 1	No	0	<b>0.5</b>
C42PLSELA: Do regional/state organizations (meeting and/or regional leadership) play a role in suggesting/proposing leadership candidates for party consideration? A. Yes B. No -888. Missing -999. NA. Quantification in AIPD Round 2: 0.75	No	0	
C43APLSELA: Does a national party collective body (e.g., Party Congress or National Executive) play a role in suggesting/proposing leadership candidates for party consideration? A. Yes B. No -888. Missing -999. NA. Quantification in AIPD Round 2: 0.5	Yes	0.5	
C43BPLSELA Does/do the National Party Leader(s) play a role in suggesting/proposing leadership candidates for party consideration? A. Yes B. No -888. Not Provided -999. Not Applicable. Quantification in AIPD Round 2: 0.25	No	0	
<b>IPD-Variable: Manifesto_Vote_AIPD (mvAIPD)</b>			
C101MAN2: Role of the party leader and/or a drafting committee directly appointed by him/her: 1. Formal Input / 2. Vote / 3. A and B / 4. Neither A or B / 5. Other / -999. NA	1 and 2	0	<b>0.25</b>
C102MAN3: Role of national executive committee. 1. Formal Input / 2. Vote / 3. A and B / 4. Neither A or B / 5. Other / -999. NA	1 and 2	0.25	
C103MAN4: Role of parliamentary party. 1. Formal Input / 2. Vote / 3. A and B / 4. Neither A or B / 5. Other / -999. NA	Neither 1 or 2	0	
C104MAN5: Party congress delegates. 1. Formal Input / 2. Vote / 3. A and B / 4. Neither A or B / 5. Other / -999. NA	Neither 1 or 2	0	

The following table displays the calculation of the individual AIPD variables and their aggregation in the three components ‘programme’, ‘personnel’ and ‘structure’. The personnel component is composed partly of the mean value of the four party leader variables and partly of the candidate variable.

<b>Component</b>	<b>IPD Variables</b>	<b>Values CDU</b>	<b>Component Value CDU</b>	<b>Component Value CDU</b>
Programme	Manifesto_Vote_AIPD (mvAIPD)	0.25	0.25	<b>0.25</b>
Personnel	PartyLeader_SelectionVote_Process	0.5	0.69	<b>0.72</b>
	PartyLeader_Selection_Vote	0.25		
	PartyLeader_SelectionVote_Existent	1		
	PartyLeader_SelectionRules_Existent	1		
	Candidate_Selection_Vote	0.75	0.75	
Structure	Ex-Officio-Seats_Executive	0.55	0.7	<b>0.7</b>
	Congress_Frequency	0.5		
	Congress_VotingRights	0.75		
	PartyLeader_Prerogatives/Accountability	1		
<b>Total CDU</b>				<b>0.56</b>

## 8. Missing Values Analyses

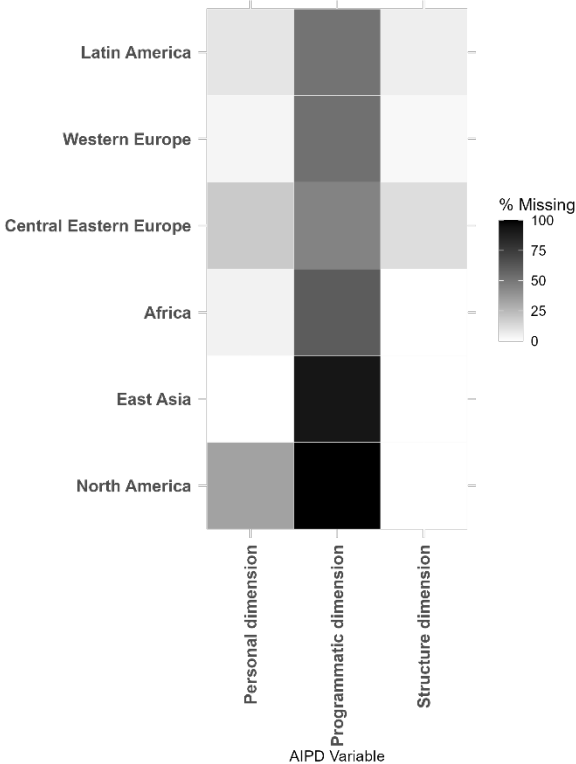
In Round 2 there were 14 of 288 parties with total missing values for the AIPD components. However, especially the programmatic component produced, like in Round 1, many missing values. Of 288 parties there were 159 missing values for this component.

Frequencies of the programmatic component AIPD.

	Freq.	Percent	Cum.
<b>Missing</b>	159	55.21	55.21
0	4	1.39	56.6
0.25	34	11.81	68.4
0.5	5	1.74	70.14
1	86	29.86	100
Total	288	100	

We calculated for all regions the share of missing values in all components. As it is evident, in all regions the manifesto component displays a high share of missing values. The two other dimensions work in all regions on average well and show a low share of missing values. The higher share of missing values in the personal dimension in North America is due to the prevalence of primaries for party leader selection.

*Distributions of missing values for AIPD components*



For this reason, we calculated the AIPD, like in Round 1, with and without the programmatic component. Both indices are very similar, they correlate with a Pearson's  $r$  of 0.84.

Variable	Obs	Mean	Std. Dev.	Min	Max
AIPD	274	0.63	0.17	0	1
AIPD without programmatic component	274	0.61	0.16	0	1

Subsequently, we present the share (%) of missing values for the AIPD and PIPD variables. For the AIPD, the variables with the highest share of missing values are Party Leader Vote Process (69.54%), Manifesto Vote (67.46%) and Party Leader Selection Vote (57.64%). The variables with the lowest share of missing values are Party Leader Accountability (4.37%), Ex-Officio-Seats (10.19%) and Congress Frequency (12.95%).

Region	Congress Frequency	Candidate Selection Vote	Congress Voting	Ex-Officio-Seats	Manifesto Vote
North America	0.00	33.33	33.33	0.00	100.00
East Asia	14.29	64.29	42.86	0.00	92.86
Africa	17.39	34.78	39.13	13.04	60.87
Central Eastern Europe	14.67	56.00	41.33	16.00	45.33
Western Europe	7.44	27.27	16.53	8.26	52.89
Latin America	18.18	30.30	30.30	9.09	51.52

Region	Party Leader Selection Vote	Party Leader Accountability	Party Leader Rules	Party Leader Vote Process	Party Leader Vote Existent
North America	100.00	0.00	50.00	100.00	33.33
East Asia	78.57	0.00	28.57	100.00	7.14
Africa	21.74	0.00	21.74	34.78	30.43
Central Eastern Europe	33.33	13.33	36.00	54.67	40.00
Western Europe	42.98	4.96	8.26	52.07	14.05
Latin America	39.39	6.06	12.12	51.52	24.24

For the PIPD, the variables with the highest share of missing values is Ballot Vote with 75.63%, followed by Manifesto-Vote (52.55%). Candidate Selection and Party Leader Selection vote display relatively low scores with 34.77%, respectively 32.61%.

Region	Ballot Vote	Candidate-Selection	Manifesto-Vote	PL-Selection Vote
North America	66.67	33.33	33.33	33.33
East Asia	78.57	50.00	64.29	57.14
Africa	82.61	39.13	69.57	30.43
Central Eastern Europe	81.33	52.00	53.33	46.67
Western Europe	62.81	9.92	55.37	9.92
Latin America	81.82	24.24	39.39	18.18

Looking at the variance of missing values for each AIPD variable, it is evident that variables with low missing values show similar values across all regions. Those are:

Congress Frequency, mean = 12.96, SD = 6.88

Ex-Officio-Seats, mean = 10.20, SD = 8.89

PL-Accountability, mean = 4.37, SD = 15.68

PL-Selection Rules, mean = 28.64, SD = 15.68

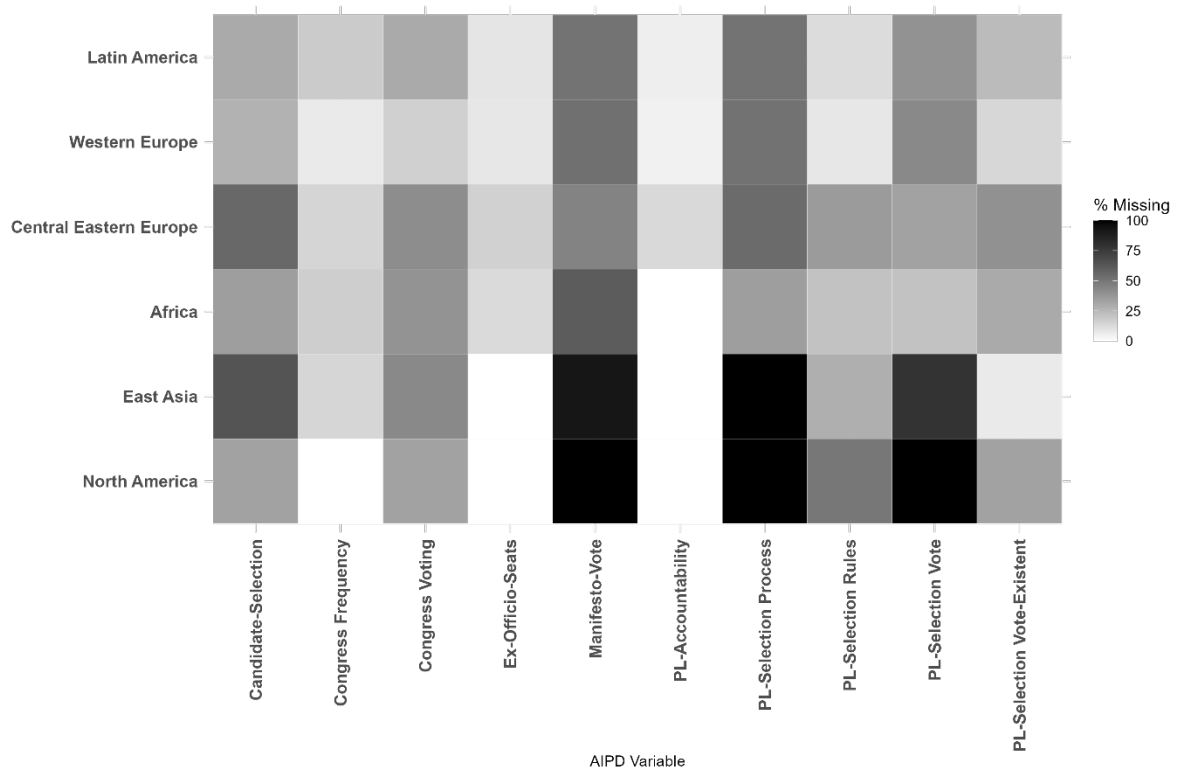
PL-Selection Vote-Existent, mean = 27.57, SD = 13.35

Conversely, variables characterized by higher missing values maintain this pattern regionally. Among them are the variables with a medium level of missing value (Congress Voting, mean = 41.57, SD = 22.13 and Candidate-Selection, mean = 43.18, SD = 15.09). However, there is also some variation. For the variables with higher share of missing values there is some more deviation in between. These variables are Manifesto Vote (Mean = 56.46, SD = 15.09), Party Leader Selection Process (PL-Selection Process Mean = 69.54, SD = 27.39) and Party Leader Selection Vote (Mean = 57.64, SD = 30.42). In East Asia and North America in particular, some variables can (almost) not be covered at all. Outliers are therefore particularly significant here. In addition, in some of these countries we have a tradition of organizing primaries for party leader elections in which party members or even registered voters can participate.

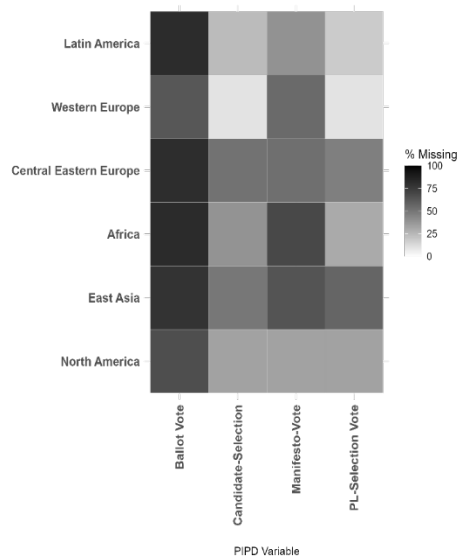
Also, the distribution of missing variables varies for the PIPD index between regions. The regions with the highest shares of missing values are Africa (55.44%), Central Eastern Europe (58.33%) and East Asia (62.5%). While Latin America (40.91%), Western Europe (34.50%) and North America (41.67%) display rather low shares of missing values. For all variables the variance between regions is similar (SD around 16), while it is the lowest for the Ballot Vote variable (SD = 10.44). Thus, we see variance in the distribution of missing values, but overall no stark differences between the regions.



*Distributions of missing values for all AIPD variables by region*



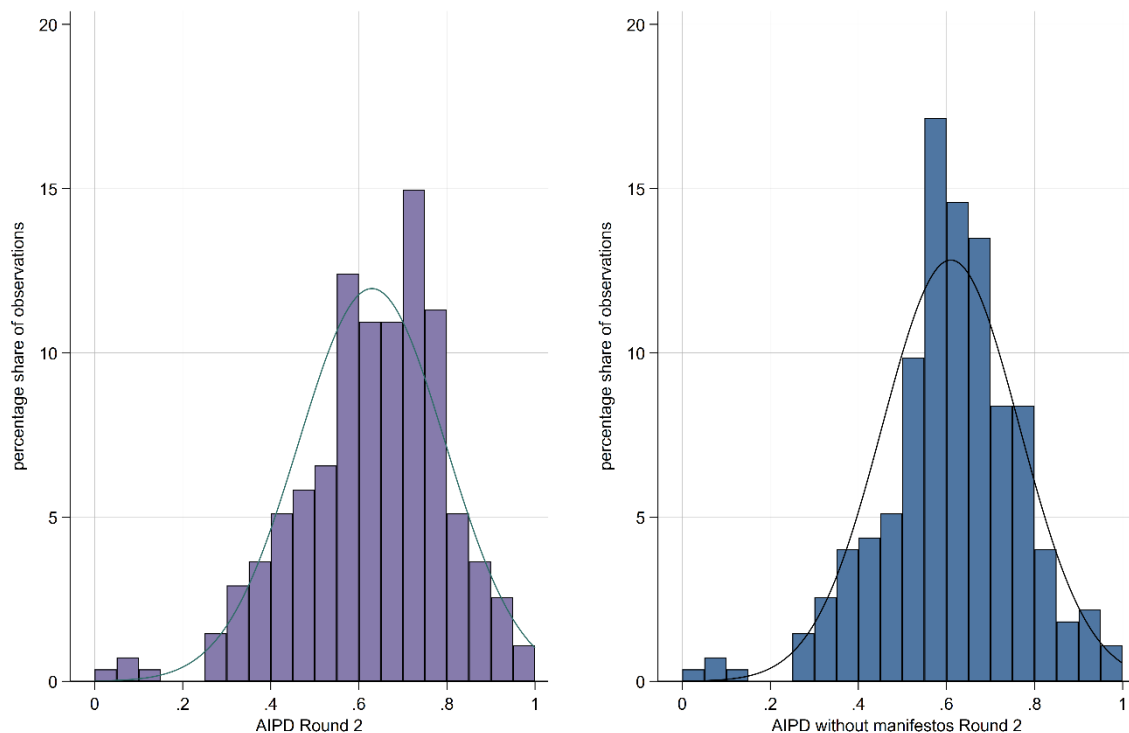
*Distribution of missing values for all PIPD variables by region*



## 9. Distribution of the AIPD with and without the programmatic component in PPDB round 2

The AIPD index in R2 covers for 274 parties. The mean value is 0.63 (SD = 0.17), the median is 0.65. We can observe that 50 % of all cases lie between 0.55 and 0.75. Thus, we see a stark concentration on AIPD values in the upper levels. There are some parties that stand out, as they display very low values beneath 0.1. Those cases are the Israelian Shas, Agudat Yisrael and the Bulgarian Volya. Those results are plausible as Volya is an Entrepreneur Party directed at its leader Veselin Mareshki. Both Israeli parties are Haredi (strictly Orthodox), whose organizations are focused on the party's leadership. The AIPD without the programmatic component displays a mean value of 0.61 (SD = 0.16), the median is 0.62.

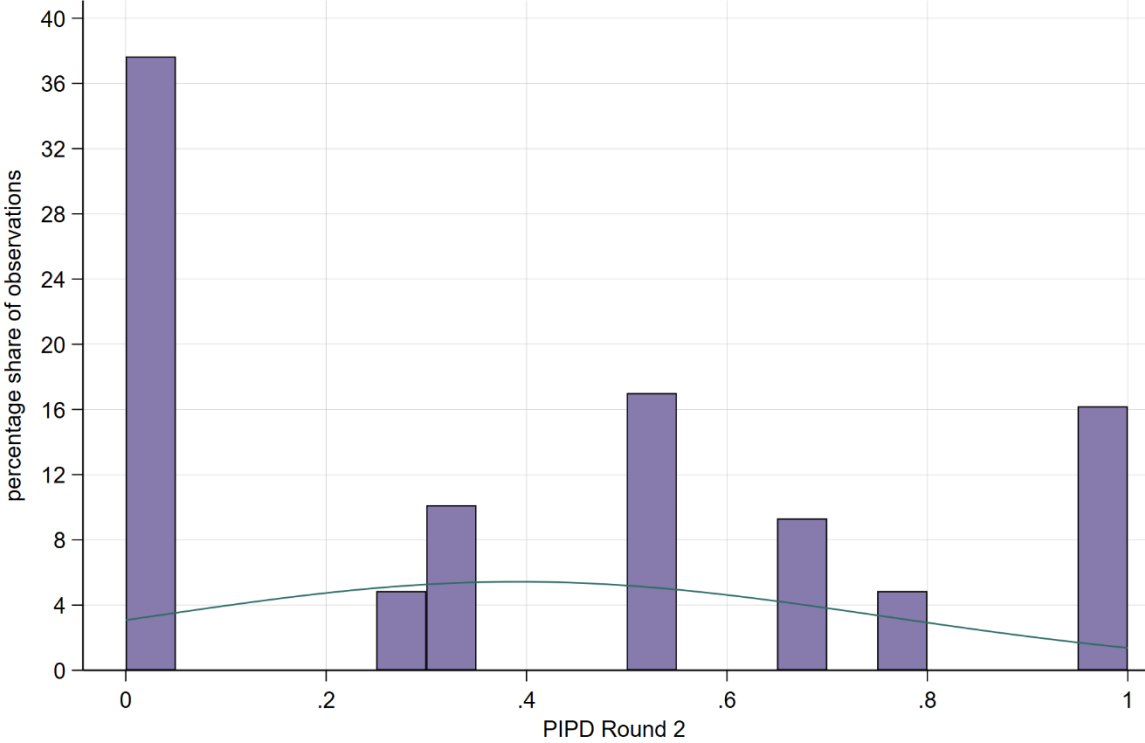
*Distribution of AIPD R2 with and without manifesto component*



## 10. Distribution of the PIPD in PPDB round 2

The PIPD index of R2 consists of 242 observations. The mean value is 0.39 (std. dev. = 0.37), the median is 0.33. Figure 2 displays the distributions of the PIPD in R2. In R2 the largest share of parties (37.65 %) did not envisage any plebiscitary decision-making methods. The share of parties with full plebiscitary decision-making methods is at 16.82 % in (compared to R1 this number doubled). In between are parties with varying degrees of PIPD ranging from 0.25 to 0.75. There are no parties that stand out, as the full scale of the PIPD is covered.

*Distribution of PIPD R2*



## 11. Parties from R1 that are missing in R2

The comparison of both rounds reduces the number of parties from 145 (R1) and 274 (R2) to 132 parties that are represented in both rounds. There are some parties that were part of the IPD-indices in R1 but not anymore in R2. The following table displays those parties.

<b>Country</b>	<b>Party</b>
Austria	Alliance for the Future
Spain	Democratic Convergence of Catalonia
Germany	Pirate Party
Italy	Union of the Centre
Belgium	Libertarian, Direct, Democratic
Italy	The People of Freedom
Italy	Italy of Values
Poland	United Poland
Poland	Palikot's Movement
Romania	Conservative Party
South Korea	New Frontier Party
Canada	Bloc Quebecois
Israel	Kadima

## References

- Berge, B. von dem, and Poguntke, T. (2016), Intra-party-democracy-indexes based on the PPDB-Data, <[https://www.pruf.de/fileadmin/redaktion/Oeffentliche\\_Medien/PRuF/Daten\\_zum\\_Download/IPD-Index\\_R1\\_OxfordPaper\\_6.11.2016.pdf](https://www.pruf.de/fileadmin/redaktion/Oeffentliche_Medien/PRuF/Daten_zum_Download/IPD-Index_R1_OxfordPaper_6.11.2016.pdf)>, accessed 6 May 2024.
- Poguntke, T.; Scarrow, S. E.; Webb, P. D., (2020), "PPDB\_Round1a\_1b\_consolidated\_v1", <https://doi.org/10.7910/DVN/NBWDFZ>, Harvard Dataverse.
- Scarrow, S. E., Webb, P., and Poguntke, T. (2022), "Political Party Database Round 2 v4 (first public version)", <https://doi.org/10.7910/DVN/0JVUM8>, Harvard Dataverse.